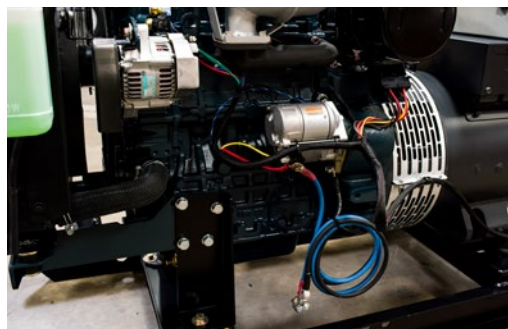
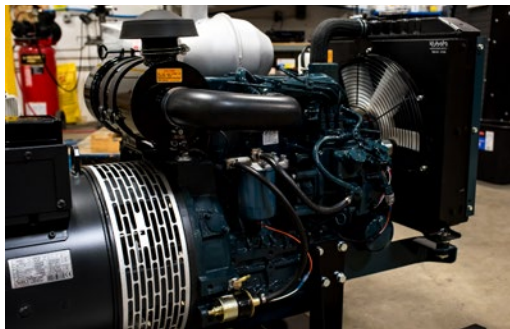




Standard Features

- Kubota 4-cylinder diesel engine
- Mechanical speed governing provides > 5% speed regulation, no load to full load
- EPA tier 4 compliant
- Liquid cooled with industrial grade radiator and belt driven blower fan
- Manual safety shutdown override, fuse protection
- Safety shutdowns, energized-to-run, for low oil pressure/high coolant temperature
- Four anti-vibration mounts between gen set and base
- Electric fuel transfer and priming pump (12 VDC)
- Battery cables for 12 VDC starting system
- Key start panel with hour meter

Powered by a Kubota diesel engine, this generator set produces 36 kilowatts of prime power output. The engine is directly coupled to a Mecc Alte generator, and the entire set is mounted on a rugged steel skid. All components are suitable for prime or intermittent usage. The KPG 36kW is constructed to UL approved standards, and is thoroughly load tested prior to shipment.



Note: Pictures shown are for illustration purposes only. Product will vary depending on actual configuration.

BUILT ARCTIC TOUGH

www.EquipmentSourceInc.com

Specifications

Engine

Manufacturer	Kubota
Model	V3600T-E3BG
Cylinders	Four
Bore x Stroke	3.86" x 4.72"
Displacement	3620 cc (220.9 cu.in.)
Comp. ratio	21.8:1
Engine weight	626 lbs dry

Fuel system

Fuel type	#2 diesel or #1 ULSD
Injection Pump	Bosch PFR
Nozzle type	Throttle type
Transfer pump	Electric, 12 VDC
Fuel lift	1 meter (3.3 ft)
Suction fitting	3/8" male NPT
Return fitting	3/8" male NPT
Specific fuel consumption	2.50 gph @ full load 1.30 gph @ half load

Lube oil system

Grade	API classification CF or other approved. See owner manual.
Capacity	3.49 gal
Filter	Full flow, spin on

Air intake system

Filter	Replaceable element
Combustion air	55.7 cfm
Total system restriction	20" H ₂ O

DC electrical system

Starter	12V, 3.0kW
Alternator	12V, 90 Amp
Glow plugs location	Combustion chambers
Battery required	12V 650 CCA equiv, min
Run solenoid	12V Energize-to-run

Ancillary equipment

Mounting	Steel base w/ mounting holes
Isolators	Four composite mounts

Generator technical information

Manufacturer	Mecc Alte
Model	ECO 32
Construction	Four pole, brushless, open drip-proof (IP23), single bearing
Excitation	Dedicated auxiliary winding
Cooling airflow	39 m ³ /min
Leads	12
60 Hz voltages (Continuous)	240 1-phase: 142.1 A 208 3-phase: 118.5 A 480 3-phase: 51.3 A
Power factor	Single phase rating @ 1.0PF Three phase rating @ 0.8 PF
Voltage reg.	DSR digital type +/- 1% NL-> FL
Temperature rise	105C rise prime
Tel. interference	THF <2%
Winding pitch	Two thirds
Control system	Self-excited

Cooling system

Radiator	Finned tube type
Material	Copper core, soldered tanks
Pressure	12.9 psi max
Fan type	Blower, nylon
Water pump	Gear case mounted
Type	Centrifugal, belt drive
Thermostat	Wax pellet type
Recommended coolant	50/50
Cooling air required	3338 cfm

Exhaust system

Muffler type	Industrial grade
Mounting	Vertical with up outlet
Restriction	1.5 in Hg max

Dimensions

Please contact salesperson for weight and dimensions

Anchorage, AK
 7780 Old Seward Hwy.
 907-341-2250

Fairbanks, AK
 1919 Van Horn Rd.
 907-458-9049

Renton, WA
 1010 SW 41st St.
 425-251-6119

Williston, ND
 5064 Bennet Loop
 701-774-5312