

The high-volume, self-priming, mobile pumping solution that won't quit.

- Pioneer Prime pump powered by Kubota diesel engine
- 2600 gpm flow rate with 3-inch solids handling
- Vacuum assisted, run-dry priming system
- Durable ESI trailer with built-in fuel tank



**ES
PR
IM
E
P
UM
P**

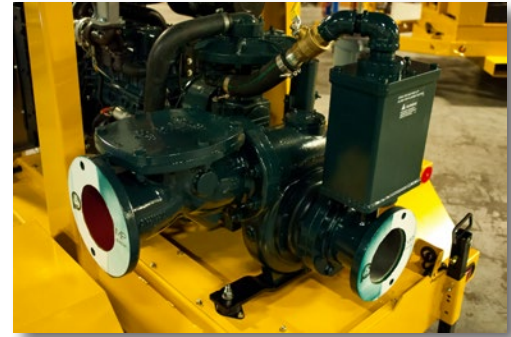


BUILT ARCTIC TOUGH

www.EquipmentSourceInc.com

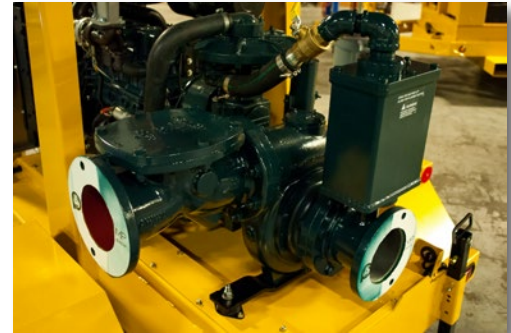
Pump

- Pioneer Prime series pump
- 6-inch suction and discharge flanges
- Maximum flow rate of 2600 gallons per minute
- 3-inch solids handling capabilities for application flexibility
- Up to 140-foot lift to move liquid to higher discharge points
- UltraPrime™ priming system with vacuum assist pump provides run-dry operation
- Automatic self-priming in cases of lost suction
- Heavy-duty construction for reduced maintenance costs
- High efficiency design for reduced fuel costs



Engine

- Kubota V3600T 4-cycle, turbocharged diesel engine
- Maximum shaft power of 70 hp
- DSE control panel for ease of operation and engine speed monitoring
- Optima Spiral Cell technology for superior starting performance



Trailer

- Powder coated trailer and components
- 115 gallon built-in fuel tank
- Rear drop legs for stability during operation
- Front stone guard to protect engine during transport



Specifications

Connections	6" x 6" Class 150 ANSI flanges
Max flow rate	2600 gpm (9842 lpm)
Max solids handling	3" (76 mm)
Max lift	140' (42 meters)
Max operating speed	2200 rpm
Fuel capacity	115 gal (435 L) ULSD
Fuel consumption	3.5 gph @ 2200 rpm (max) 2.3 gph @ 1800 rpm



Anchorage, AK
 7780 Old Seward Hwy.
 907-341-2250

Fairbanks, AK
 1919 Van Horn Rd.
 907-458-9049

Renton, WA
 1010 SW 41st St.
 425-251-6119

Williston, ND
 5064 Bennet Loop
 701-774-5312