

shindaiwa®

SPECIFICATIONS

DGK100D

CONTENTS

CHAPTER 1: GENERAL.....1

- 1. Standards**
- 2. Design Conditions**
- 3. Test and Check**
- 4. Painting**
- 5. Structure**

CHAPTER 2: SPECIFICATIONS.....2

CHAPTER 3: EQUIPMENT AND FEATURE.....3

- 1. Equipment**
 - (1) Generator**
 - (2) Welder**
 - (3) Others**
- 2. Feature**
 - (1) Feature**
 - (2) Protection Device.....4**
 - (3) Accessories**

CHAPTER 4: APPEARANCE.....5

CHAPTER 1: GENERAL

1. Standards

Design and production are in conformity with:

- (1) Japan Industrial Standards: JIS C 9300-1
- (2) Low Noise Type Construction Machinery Standard
- (3) EPA Tier 3 Emission level

2. Design Conditions

- (1) Installation Place: Outside
- (2) Ambient Temperature: -15 to +40°C
- (3) Humidity: Less than 85%
- (4) Altitude: Less than 1000 meters above sea level

3. Test and Check

Test shall be done with a complete workable unit of the diesel engine unit.

Check Items:

- (1) Insulation and Dielectric Test
- (2) Starting
- (3) Protection Device Working Test
- (4) Voltage Deviation and Speed Variation: 0-4/4 Load
- (5) Load Test: Welding and Generating 4/4 Load

4. Painting

Painting and color specifications are as per manufacturer's standard.

5. Structure

- (1) Vibration Proof Device
Alternator is directly coupled with engine and both are installed on the bed through the vibration proof device.
- (2) Low Noise
Low noise structure is put in the inside of the bonnet.
Sound Level: 58dB(A) @7m distance under no load.
- (3) Fuel Tank
A steel fuel tank is equipped and incorporated with the electrical level gauge.

CHAPTER 2: SPECIFICATIONS

			Unit	DGK100D	
Generator	Generating Method		-	Revolving Filed, Brushless AC 3-Phase-120/240V, 1 Phase	
	Rated Output		kVA/kW	100/80	
			kW	80	
	Rated Voltage	3-Phase	V	208, 240, 480	
		1-Phase		120, 139, 240, 277	
	Rated Current	1 Phase-120V	A	242 x 2 (Zigzag)	
		1-Phase-240V		242 (Zigzag)	
		3-Phase-240V		241	
		3-Phase-480V		120	
	Rated Frequency		Hz	60/50 (\pm less than 0.25%)	
	Rated Speed		min ⁻¹	1800/1500	
	Winding		-	Star with Neutral	
	Power Factor		%	80	
Insulation Class		-	Alternator: F		
Exciting Method		-	Self-Excitation (Brushless)		
No. of Poles		-	4		
Engine	Method		-	Vertical, Water-cooled 4-Cycle, Diesel Engine	
	Model No.		-	ISUZU BI-4HK1	
	No. of Cylinder (bore x stroke)		In./mm	4 (6.10 x 4.92/155 x 125)	
	Continuous Rated Output		kW{PS}	114.7{155.1}/1800 min ⁻¹	
	Rated Speed		min ⁻¹	1800/1500	
	Displacement		Liter	5,193	
	Combustion System		-	Direct Injection, Turbo-charged, Inter-cooler	
	Cooling Method		-	Water-cooling radiator	
	Lubricating		-	Forced lubrication	
	Starting		-	Electric	
	Fuel		-	ASTEM No.2 Diesel	
	Fuel Consumption		Liter	23.4/h (@full load)	
	Lubricating Oil		-	SAE Class CD or higher	
	Fuel Tank Capacity		Liter	222	
	Lubricant Volume		Liter	22	
	Coolant Volume		Liter	23	
	Starting Motor Capacity		V-kW	12V – 2.5kW	
	Alternator Capacity		V-A	12V – 110A	
Battery Capacity		V-AH	12V – 150AH		
L x W x H		in/mm	102x49x71/2590x1240x1800		
Dry Weight		lbs./kg	4564/2070		

*Specifications subject to change without notice.

CHAPTER 3: EQUIPMENT AND FEATURE

1. Equipment

- (1) Generator
- Voltage Meter 1 pc.
 - Amp. Meter 1 pc.
 - Freq. Meter 1 pc.
 - Volt Meter Selector..... 1 pc.
 - Amp. Meter Selector 1 pc.
 - Breaker:
 - Main Circuit Breaker..... 1 pc.
 - Circuit Breaker (1-phase) 2 pcs.
 - Circuit Breaker (3-phase) 3 pcs.
 - GFCI Receptacle (20A)..... 2 pcs.
 - Twist & Lock Type Receptacle (50A) 1 pc.
- (2) Others
- Idle Control Switch 1 pc
 - Starter Switch 1 pc.
 - Monitor Lamp 1 set
 - Diagnosis
 - Air Filter
 - Boost
 - Battery Charge
 - Oil Pressure
 - Over Heat
 - Over Speed

2. Feature

- (1) Feature
- Sound Level 58B(A) at 7m distance under no load
 - Generating Performance Single Phase & Three Phase
 - 2 Way Drive Control High/Auto
 - Environmental EPA Emission 3 Compliance and Low Noise Level
 - Fuel Tank Capacity 222 Liters
 - Dry Weight 2070 kg
 - Dimensions (LxWxH) 2590 x 1240 x 1800 mm

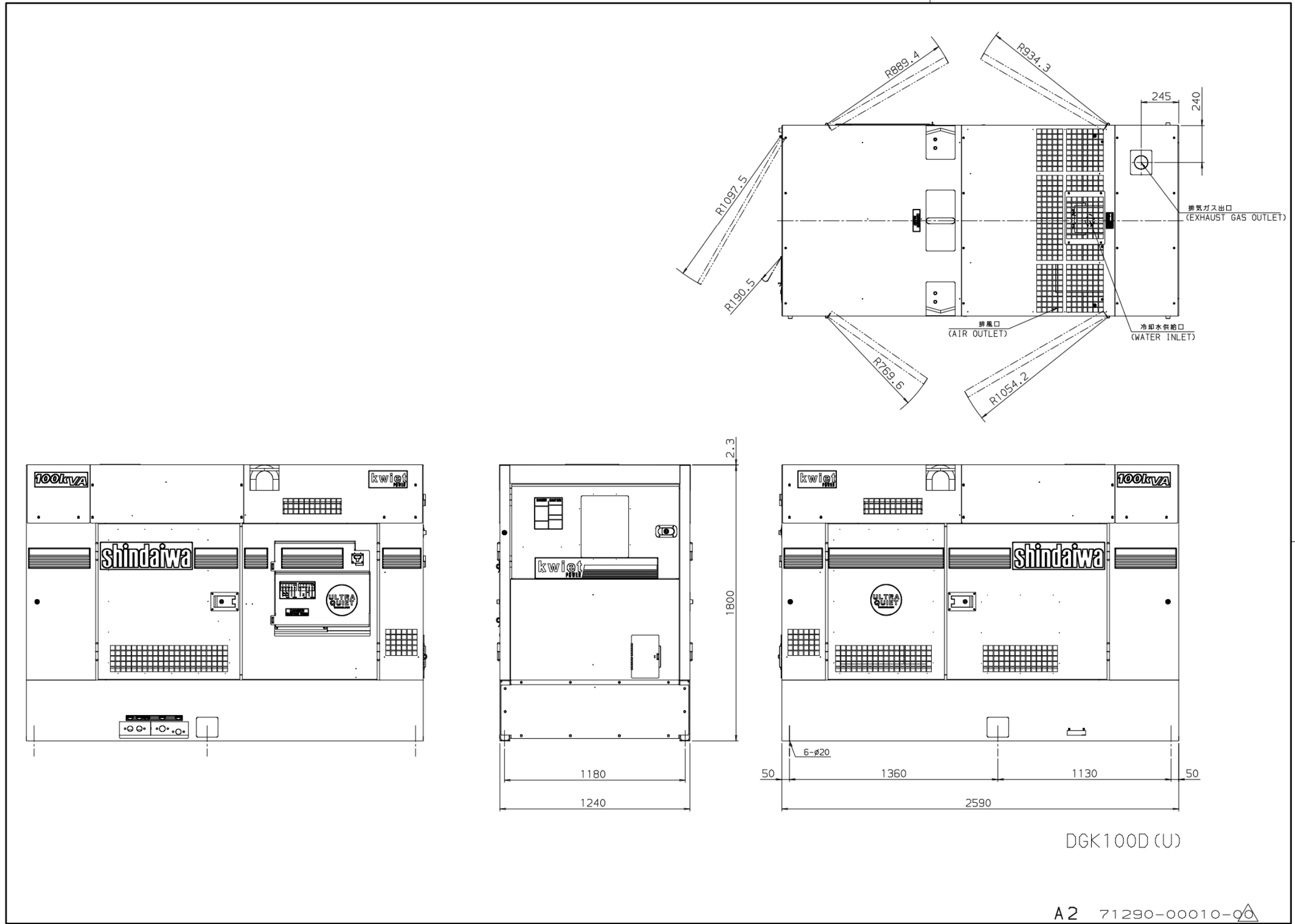
(2) Protection Device

Item	Set Value	Monitor Lamp	Engine Shut-Down
Diagnosis		○	-
Boost Temp.	85°C	○	-
Over Speed	2070min ⁻¹	○	-
Air Filter	when clogged	○	-
Over Heat	105°C	○	○
Battery Charge	-	○	
Oil Pressure	100kPa	○	○

(3)Accessories

Owner's & Operator's Manual	1 copy
Engine Instruction Manual	1 copy
Tool Set	1 set
• Spanner	3 pcs
• Screw Driver	1 pc
• Plug Wrench	1 pc
Starter Key	1 set

CHAPTER 4: APPEARANCE



A2 71290-00010-00

YAMABIKO CORPORATION

**35 SHIN-UJIGAMI, KITA-HIROSHIMA-CHO,
YAMAGATA-GUN, HIROSHIMA 731-1597 JAPAN**

Telephone: (81)826-72-5140

Fax: (81) 826-72-7004

www.yamabiko-corp.co.jp